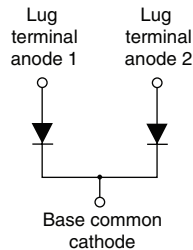


## FRED Pt™ Ultrafast Soft Recovery Diode, 400 A


**TO-244**

**FEATURES**

- Ultrafast recovery
- Lead (Pb)-free
- Designed for industrial level


**RoHS  
COMPLIANT**
**BENEFITS**

- Reduced RFI and EMI
- Higher frequency operation
- Reduced snubbing
- Reduced parts count

**DESCRIPTION**

FRED Pt™ diodes are optimized to reduce losses and EMI/RFI in high frequency power conditioning systems. The softness of the recovery eliminates the need for a snubber in most applications. These devices are ideally suited for HF welding, power converters and other applications where switching losses are significant portion of the total losses.

**PRODUCT SUMMARY**

$I_{F(AV)}$	400 A
$V_R$	600 V
$t_{rr}$	90 ns

**ABSOLUTE MAXIMUM RATINGS**

PARAMETER	SYMBOL	TEST CONDITIONS	MAX.	UNITS
Cathode to anode voltage	$V_R$		600	V
Continuous forward current per diode	$I_{F(AV)}$	$T_C = 25\text{ °C}$	330	A
		$T_C = 85\text{ °C}$	230	
		$T_C = 97\text{ °C}$	200	
Single pulse forward current per diode	$I_{FSM}$		1200	
Maximum power dissipation	$P_D$	$T_C = 25\text{ °C}$	660	W
		$T_C = 97\text{ °C}$	280	
Operating junction and storage temperatures	$T_J, T_{Stg}$		- 40 to 150	°C

**ELECTRICAL SPECIFICATIONS PER LEG ( $T_J = 25\text{ °C}$  unless otherwise specified)**

PARAMETER	SYMBOL	TEST CONDITIONS	MIN.	TYP.	MAX.	UNITS
Breakdown voltage	$V_{BR}$	$I_R = 100\text{ }\mu\text{A}$	600	-	-	V
Forward voltage	$V_{FM}$	$I_F = 200\text{ A}$	-	1.45	2.0	
		$I_F = 400\text{ A}$	-	1.67	2.3	
		$I_F = 200\text{ A}, T_J = 150\text{ °C}$	-	1.13	1.4	
		$I_F = 400\text{ A}, T_J = 150\text{ °C}$	-	1.39	1.8	
Reverse leakage current	$I_{RM}$	$T_J = 150\text{ °C}, V_R = V_R\text{ rated}$	-	0.3	1.38	mA
Series inductance	$L_S$	From top of terminal hole to mounting plane	-	5	-	nH

<b>DYNAMIC RECOVERY CHARACTERISTICS</b> ( $T_J = 25\text{ }^\circ\text{C}$ unless otherwise specified)							
PARAMETER	SYMBOL	TEST CONDITIONS		MIN.	TYP.	MAX.	UNITS
Reverse recovery time	$t_{rr}$	$T_J = 25\text{ }^\circ\text{C}$	$I_F = 200\text{ A}$ , $di_F/dt = 200\text{ A}/\mu\text{s}$ , $V_R = 200\text{ V}$	-	90	-	ns
		$T_J = 150\text{ }^\circ\text{C}$		-	240	-	
Peak recovery current	$I_{RRM}$	$I_F = 200\text{ A}$ , $di_F/dt = 200\text{ A}/\mu\text{s}$ , $V_R = 200\text{ V}$		-	8.3	-	A
		$I_F = 200\text{ A}$ , $di_F/dt = 200\text{ A}/\mu\text{s}$ , $V_R = 200\text{ V}$ , $T_J = 150\text{ }^\circ\text{C}$		-	24	-	
Reverse recovery charge	$Q_{rr}$	$I_F = 200\text{ A}$ , $di_F/dt = 200\text{ A}/\mu\text{s}$ , $V_R = 200\text{ V}$		-	830	-	nC
		$I_F = 200\text{ A}$ , $di_F/dt = 200\text{ A}/\mu\text{s}$ , $V_R = 200\text{ V}$ , $T_J = 150\text{ }^\circ\text{C}$		-	4730	-	

<b>THERMAL - MECHANICAL SPECIFICATIONS</b>						
PARAMETER	SYMBOL	MIN.	TYP.	MAX.	UNITS	
Thermal resistance, junction to case	$R_{thJC}$	-	-	0.19	$^\circ\text{C}/\text{W}$	
		-	-	0.095		
Thermal resistance, case to heatsink	$R_{thCS}$	-	0.10	-		
Weight		-	68	-	g	
		-	2.4	-	oz.	
Mounting torque		30 (3.4)	-	40 (4.6)	lbf · in (N · m)	
Mounting torque center hole		12 (1.4)	-	18 (2.1)		
Terminal torque		30 (3.4)	-	40 (4.6)		
Vertical pull		-	-	80	lbf · in	
2" lever pull		-	-	35		



FRED Pt™  
Ultrafast Soft Recovery Diode,  
400 A

Vishay High Power Products

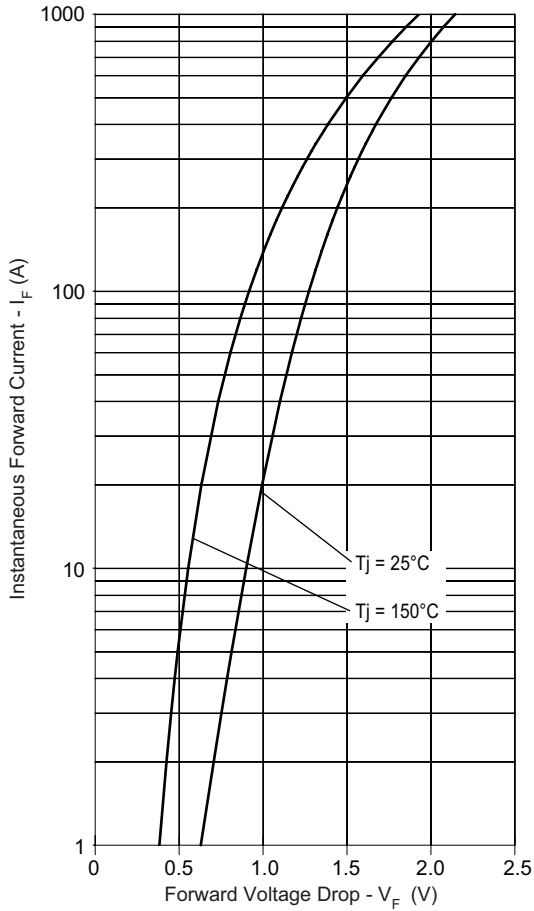


Fig. 1 - Typical Forward Voltage Drop vs. Instantaneous Forward Current (Per Leg)

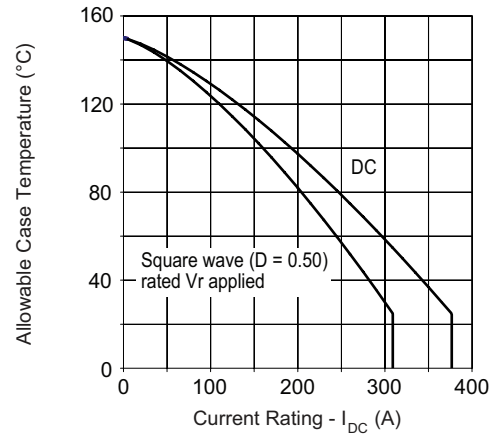


Fig. 3 - Maximum Current Rating Capability (Per Leg)

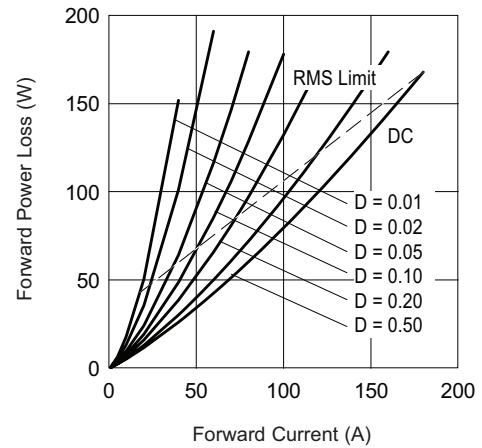


Fig. 4 - Forward Power Loss Characteristics

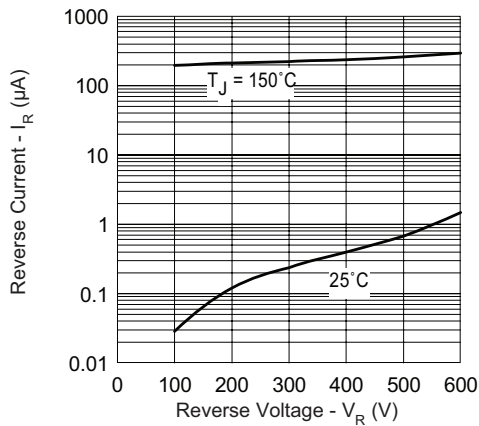


Fig. 2 - Typical Reverse Current vs. Reverse Voltage (Per Leg)

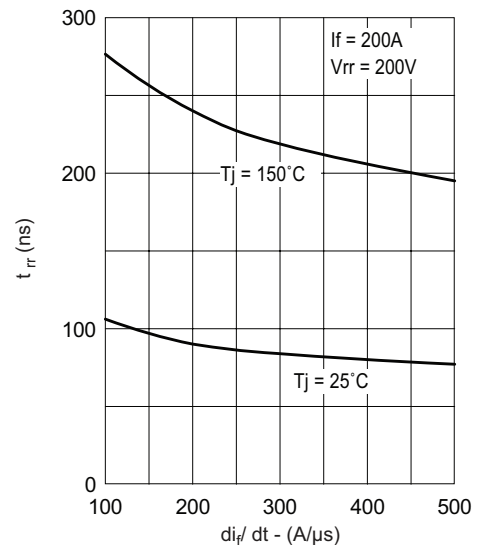


Fig. 5 - Typical Reverse Recovery Time vs.  $di_F/dt$  (Per Leg)

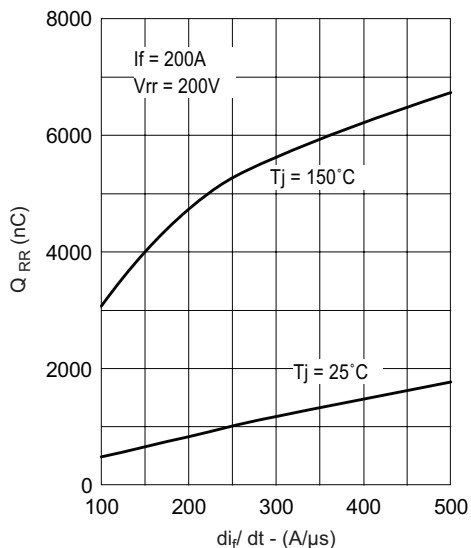


Fig. 6 - Typical Reverse Recovery Charge vs.  $di_F/dt$  (Per Leg)

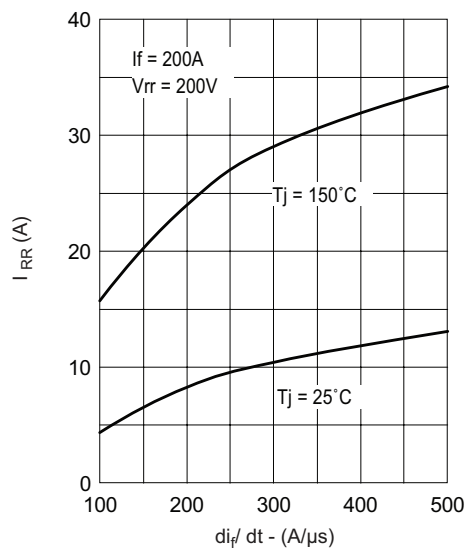


Fig. 7 - Typical Reverse Recovery Current vs.  $di_F/dt$  (Per Leg)

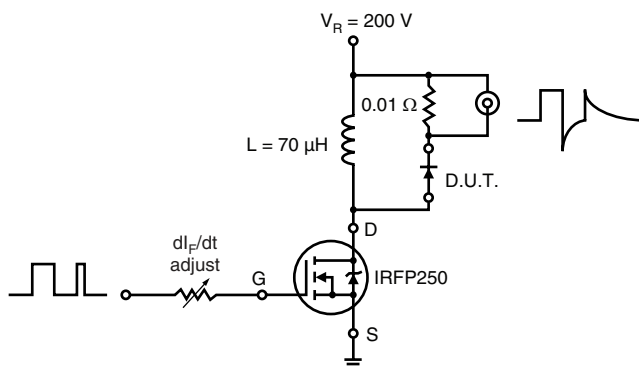


Fig. 8 - Reverse Recovery Parameter Test Circuit



FRED Pt™  
Ultrafast Soft Recovery Diode,  
400 A

Vishay High Power Products

**ORDERING INFORMATION TABLE**

Device code	<b>VS</b>	<b>UD</b>	<b>400</b>	<b>C</b>	<b>W</b>	<b>60</b>
	①	②	③	④	⑤	⑥

- 1** - Vishay HPP
- 2** - UD = FRED Pt™
- 3** - Current rating (400 = 400 A)
- 4** - Circuit configuration:  
C = Common cathode
- 5** - W = TO-244 wire bondable not isolated
- 6** - Voltage rating (60 = 600 V)

LINKS TO RELATED DOCUMENTS	
Dimensions	<a href="http://www.vishay.com/doc?95021">http://www.vishay.com/doc?95021</a>



## Disclaimer

All product specifications and data are subject to change without notice.

Vishay Intertechnology, Inc., its affiliates, agents, and employees, and all persons acting on its or their behalf (collectively, "Vishay"), disclaim any and all liability for any errors, inaccuracies or incompleteness contained herein or in any other disclosure relating to any product.

Vishay disclaims any and all liability arising out of the use or application of any product described herein or of any information provided herein to the maximum extent permitted by law. The product specifications do not expand or otherwise modify Vishay's terms and conditions of purchase, including but not limited to the warranty expressed therein, which apply to these products.

No license, express or implied, by estoppel or otherwise, to any intellectual property rights is granted by this document or by any conduct of Vishay.

The products shown herein are not designed for use in medical, life-saving, or life-sustaining applications unless otherwise expressly indicated. Customers using or selling Vishay products not expressly indicated for use in such applications do so entirely at their own risk and agree to fully indemnify Vishay for any damages arising or resulting from such use or sale. Please contact authorized Vishay personnel to obtain written terms and conditions regarding products designed for such applications.

Product names and markings noted herein may be trademarks of their respective owners.